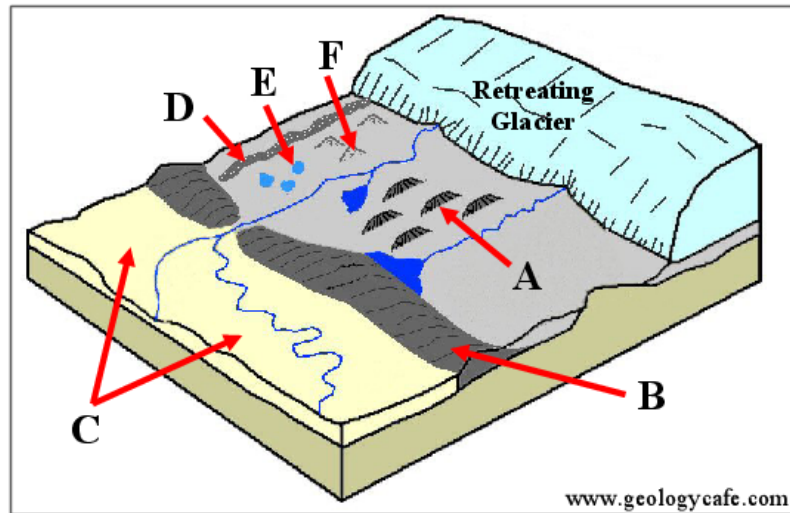


## Question 1

## A. Glaciation



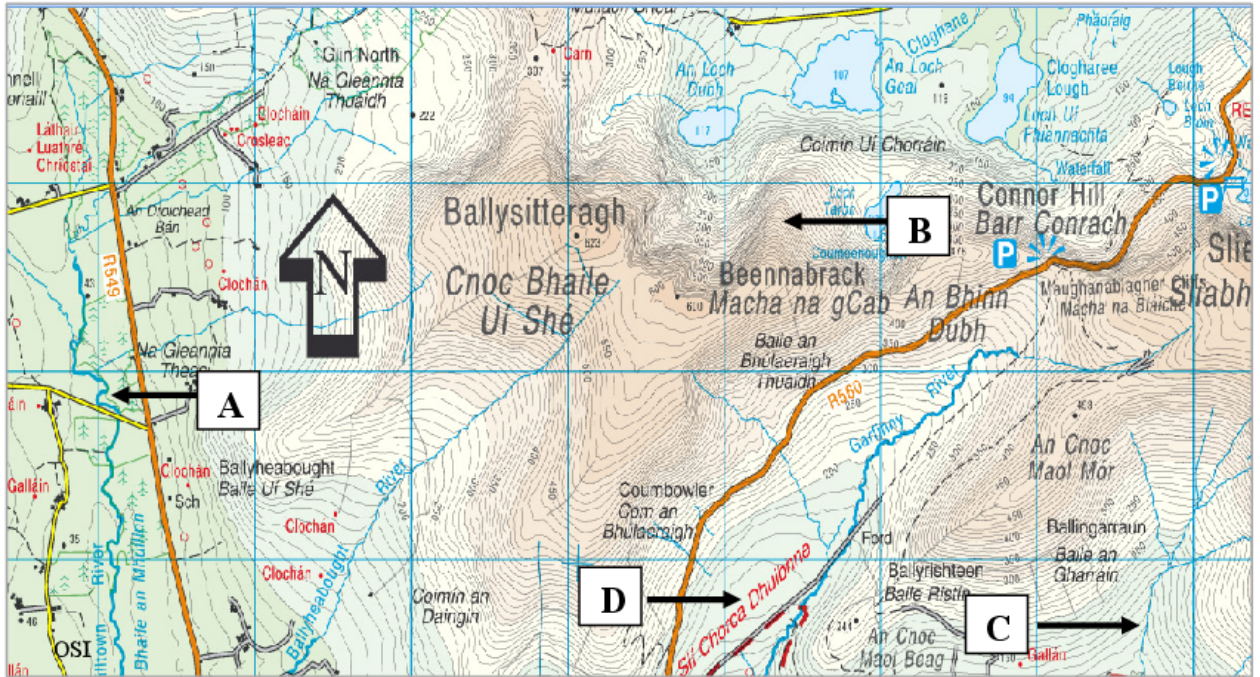
Examine the diagram above and answer each of the following questions.

- (i) Name each of the landforms A, B, C, D, E and F.
- (ii) Explain briefly what is meant by a *fluvioglacial process*.
- (iii) Name any **two** fluvioglacial landforms.

[20m]

# Question 2

## 2. Glacial and Fluvial Landforms



Examine the Ordnance Survey map extract above.

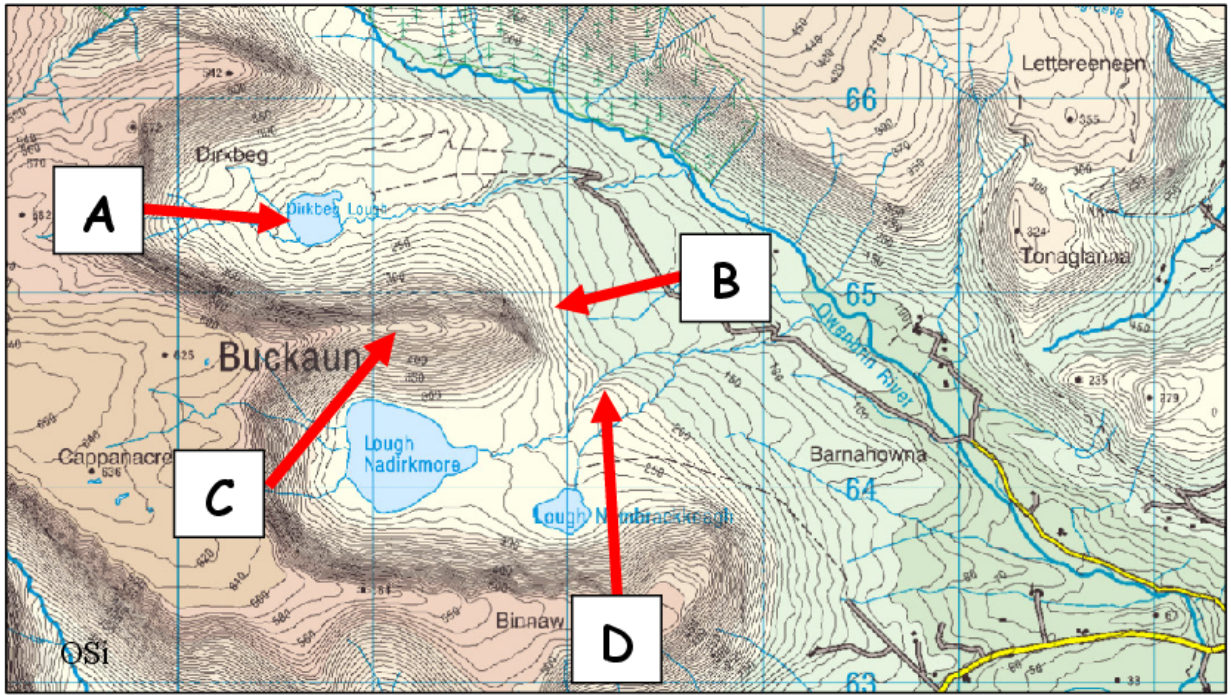
- (i) Match each of the letters A, B, C and D with the landform that best matches it in the table below.
- (ii) Indicate whether glacial processes or fluvial processes are most associated with the formation of each landform, by ticking the correct box in the table below.

Landform	(i) Letter	(ii) Glacial Processes	(ii) Fluvial Processes
U-shaped valley			
Meander			
Arête			
V-shaped valley			

[8m]

# Question 3

## 3. Glaciation



- (i) Examine the Ordnance Survey extract above and match each of the letters A, B, C and D with the correct feature in the table below.

Feature	Letter
Hanging valley	
Arête	
Tarn	
Truncated spur	

- (ii) Explain briefly each of the following terms.

Plucking \_\_\_\_\_

\_\_\_\_\_

Abrasion \_\_\_\_\_

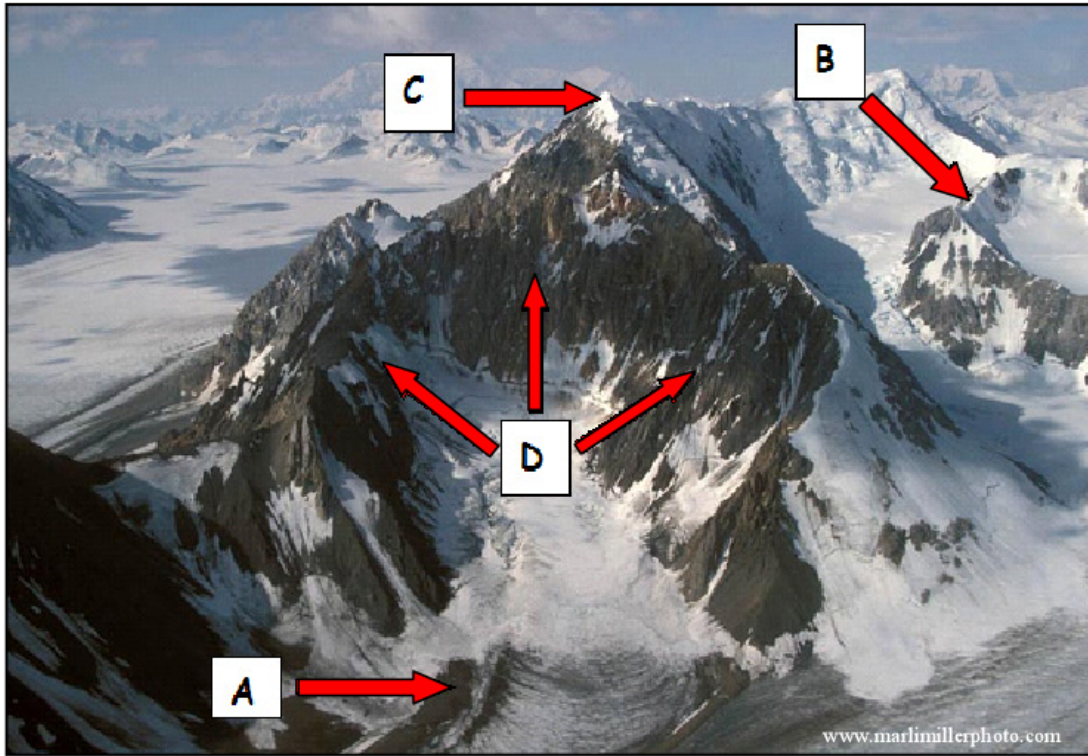
\_\_\_\_\_

[8m]



# Question 4

## 1. Glacial Landforms



Examine the aerial photograph above.

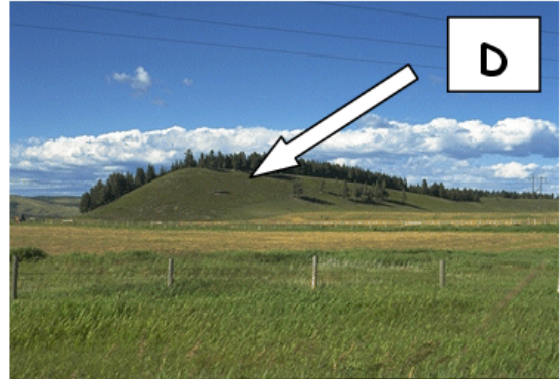
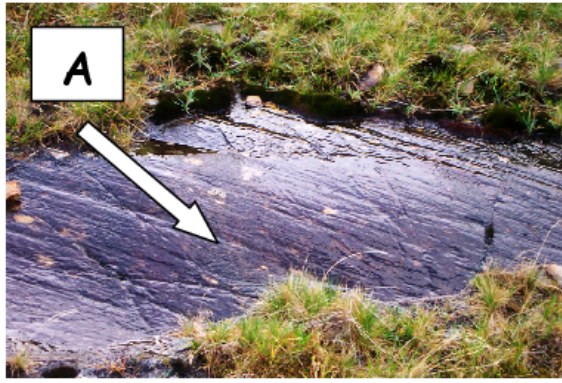
In the table below, match each of the letters A to D with the correct landform from the following list:

- Drumlin      Lateral moraine      Fjord  
Corrie/Coom/Cirque      Arête      Pyramidal peak

Letter	Landform
A	
B	
C	
D	

[8m]

Question 5



Examine the photographs above showing glacial features.

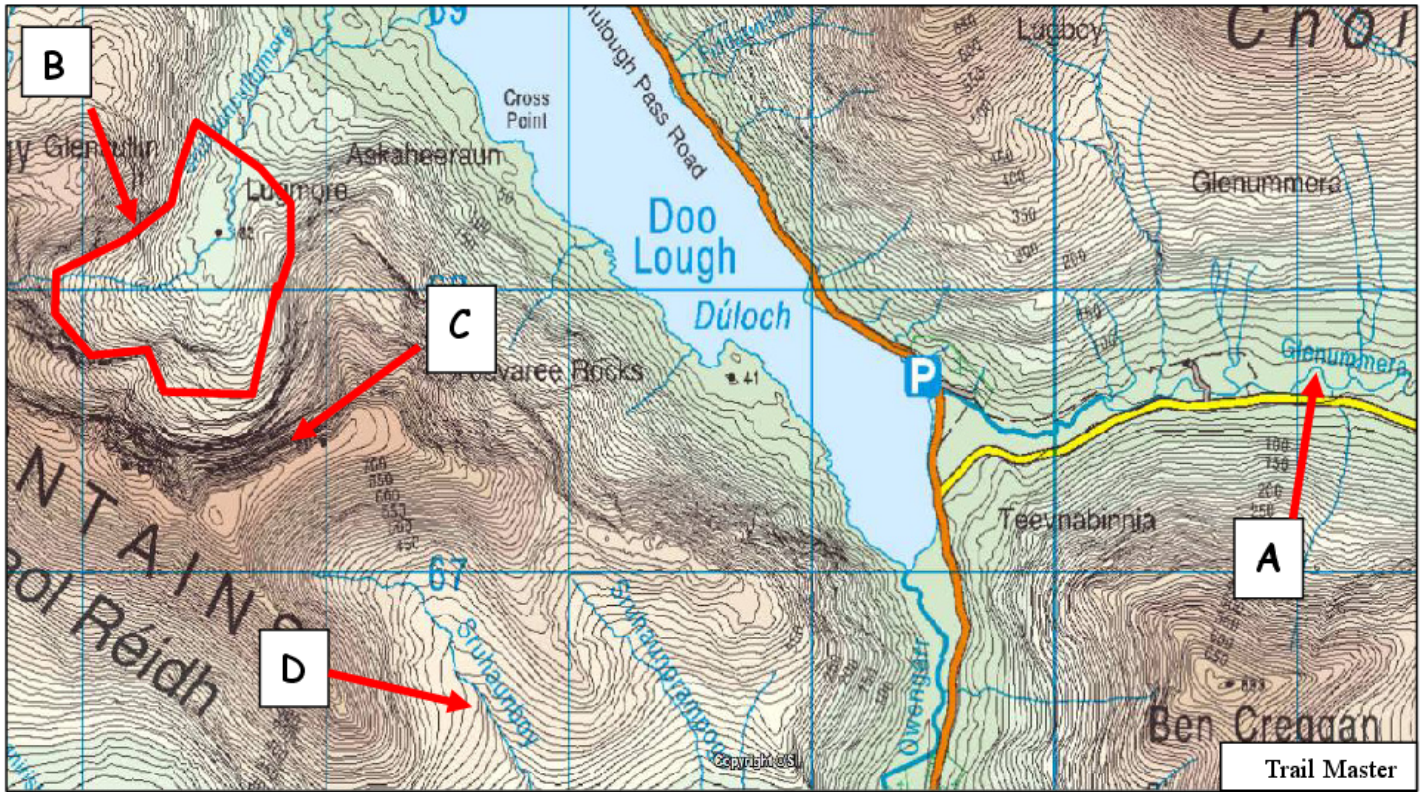
- (i) Insert the correct letter in the spaces below to identify **each** of the glacial features in the photographs above.
- (ii) State whether **each** feature was formed by the process of erosion or the process of deposition.

Photograph	Letter	Process Erosion/Deposition
Boulder clay		
Erratic		
Striations		
Drumlin		

[8m]



# Question 6



Examine the Ordnance Survey map extract above.

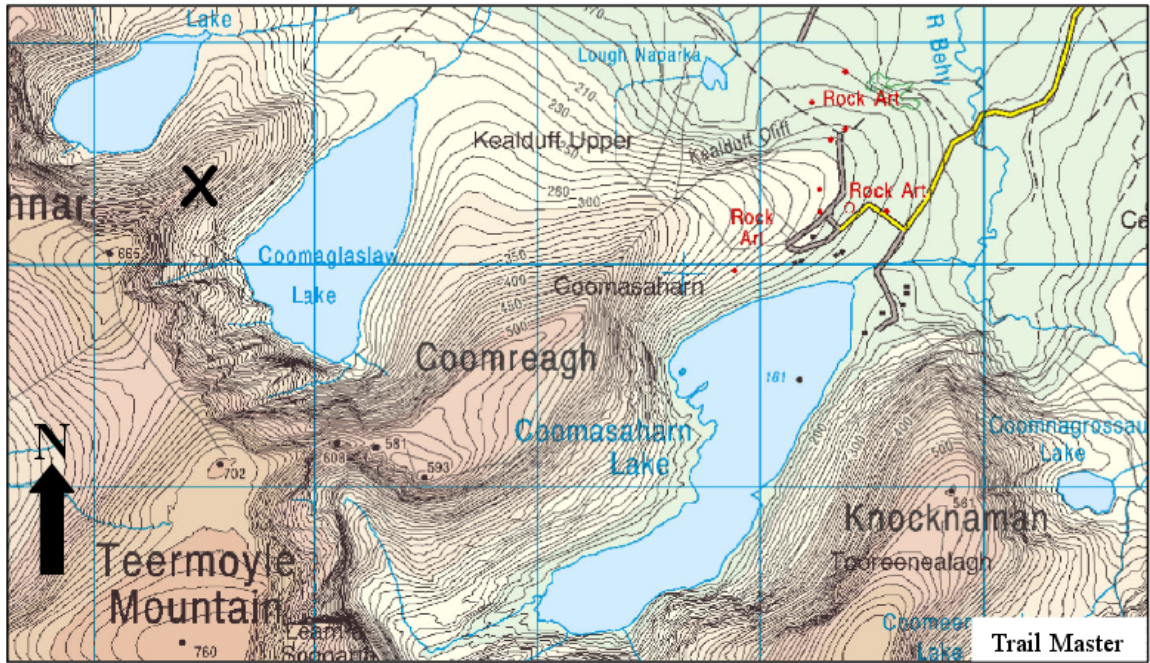
- (i) Match **each** of the letters A to D with the correct landform in the table below.
- (ii) State whether fluvial processes or glacial processes were responsible for the formation of **each** landform by ticking the correct box.

Landform	Letter	Fluvial Processes	Glacial Processes
V-shaped valley			
Corrie/Cirque			
Arête			
Meander			

# Question 7

## 5. Glacial Landforms

Examine the Ordnance Survey map extract below. Write the answers to the questions in the spaces provided.



- (i) The height above sea level of the surface of Coomasaharn Lake is:

\_\_\_\_\_ metres.

- (ii) What type of glacial lake is Coomasaharn Lake?

\_\_\_\_\_

- (iii) What is the correct name for the feature found at X? Tick the correct box.

Arête

Moraine

Pyramidal Peak

- (iv) The glacier which shaped Coomasaharn Lake moved out of the basin in which of the following directions? Tick the correct box.

North

North Eastwards

West

South Eastwards



## Question 8

### B. Landform Development

The area shown on the 1:50000 Ordnance Survey map which accompanies this paper has been shaped by fluvial, glacial, coastal and mass movement processes.

Answer (i) or (ii).

- (i) Name **one** landform on the Ordnance Survey map that was formed by fluvial **or** glacial **or** coastal processes **and** give a six figure grid reference for its location. Describe and explain with the aid of diagram(s) the processes involved in the formation of this landform.

OR

- (ii) Identify an area on the Ordnance Survey map which has very steep slopes **and** give a six figure grid reference for its location. Describe and explain **one** mass movement process which might operate in an area such as this.

[30m]

## Question 9

### 6. Landforms

Match **each** of the surface processes in Column A with the correct example in Column B.

Column A	
<i>Erosional</i>	<i>A</i>
<i>Structural</i>	<i>B</i>
<i>Mass Movement</i>	<i>C</i>
<i>Depositional</i>	<i>D</i>

Column B	
<i>Soil Creep</i>	<i>1</i>
<i>Fold Mountain</i>	<i>2</i>
<i>Pothole</i>	<i>3</i>
<i>Esker</i>	<i>4</i>

Letter	Number
<i>A</i>	
<i>B</i>	
<i>C</i>	
<i>D</i>	

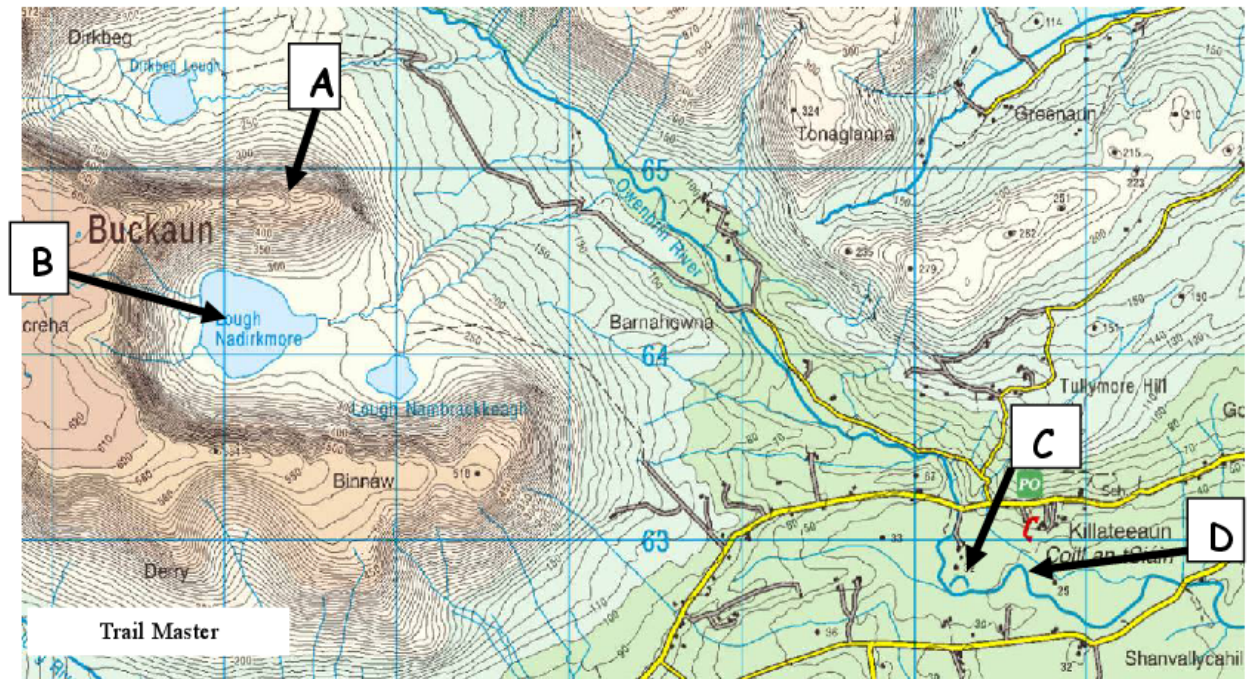
[8m]



# Question 10

## 10. Landforms

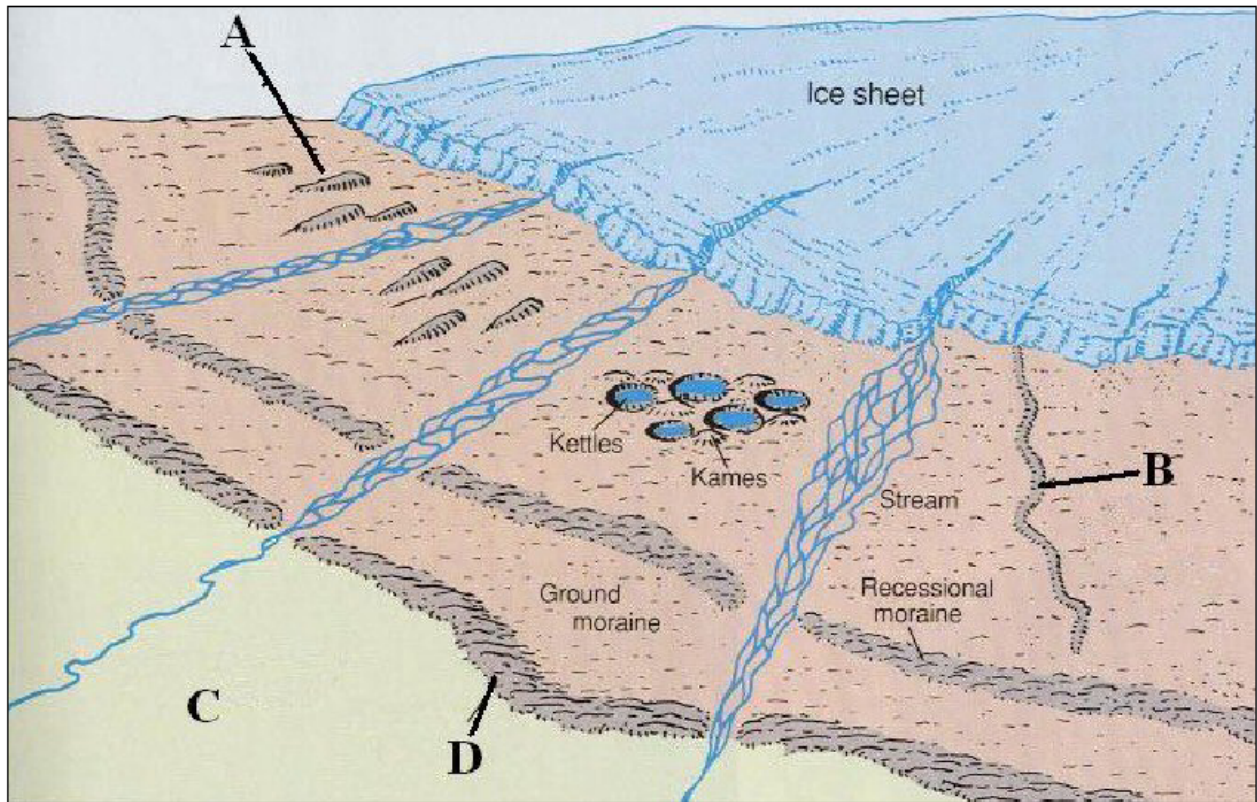
Look at the Ordnance Survey map below and answer the questions:



Question	Answer
Identify the glacial ridge at A.	
Identify the glacial landform at B.	
Identify the river landform at C.	
Identify the river landform at D.	

# Question 11

Examine this diagram, showing some glacial landforms.



[www.geography.vt.edu](http://www.geography.vt.edu)

Insert the labels A to D in their correct places in the table below:

Esker	
Terminal Moraine	
Out wash plain	
Drumlin	

## Question 12

In the space provided, match **each** of the named landforms in Column X with the description in Column Y:

**Column X**

Meander	A
Moraine	B
Sandspit	C
Scree	D

**Column Y**

Marine Action	1
Weathering	2
Fluvial Action	3
Glacial Action	4

A	
B	
C	
D	

[8]

## Question 13

Match **each** of the named landform groups in Column A with the description in Column B.

**Column A**

Delta, Moraine	<b>A</b>
Corrie, Gorge	<b>B</b>
Rift Valley, Fold mountains	<b>C</b>
Scree, Clint	<b>D</b>

**Column B**

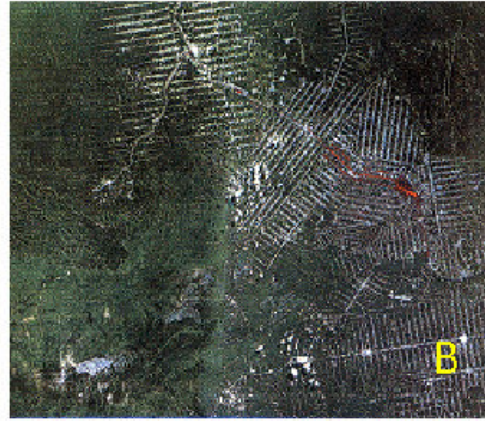
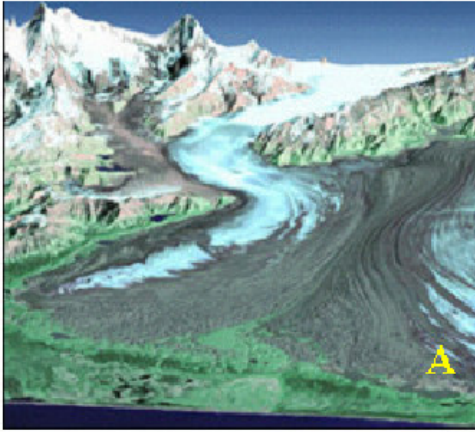
Structural Landforms	<b>1</b>
Weathering Landforms	<b>2</b>
Erosional Landforms	<b>3</b>
Depositional Landforms	<b>4</b>

<b>A</b>	
<b>B</b>	
<b>C</b>	
<b>D</b>	

[8]



# Question 14



Source: USGS

Insert the correct letter A to D in the boxes below, to identify the various images.

Volcano (Mt. Etna)	
Delta (Mississippi)	

Deforestation (Brazil)	
Glacier (Alaska)	

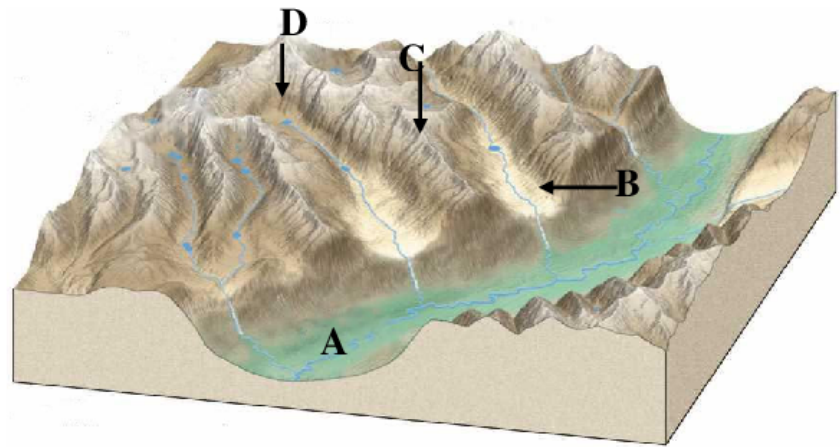
[8]

## Question 15

Examine this diagram of a glaciated landscape.

Match **each** of the following landforms with its correct letter in the diagram.

Hanging Valley	
Cirque / Corrie	
Glaciated Trough	
Arete	



[8]