

Question 1

C. Economic Activity - Exploitation of Peat

- (i) Describe **two** different ways in which technology has aided the exploitation of peat.
- (ii) Explain **two** reasons why there is limited commercial peat production in blanket bogs.

(12)

Question 2

A. Farming

A farm can be viewed as a system, involving inputs, processes and outputs. Answer each of the following questions with reference to any mixed farm that you have studied.

- (i) Name **two** farm inputs.
- (ii) Describe **two** processes that take place on the farm.
- (iii) Name **two** outputs from the farm and state how each may be used.

(10)

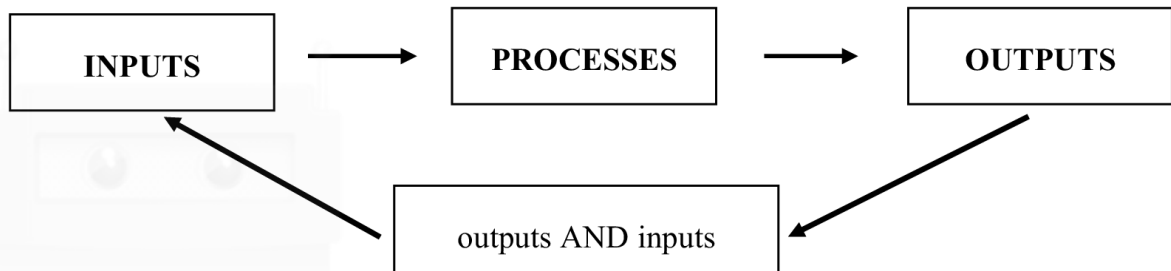
Question 3

C. Fishing

- (i) Explain **two** reasons for the over exploitation of fish.
- (ii) Describe **two** measures that could be used to prevent the over exploitation of fish.

(10)

Question 4

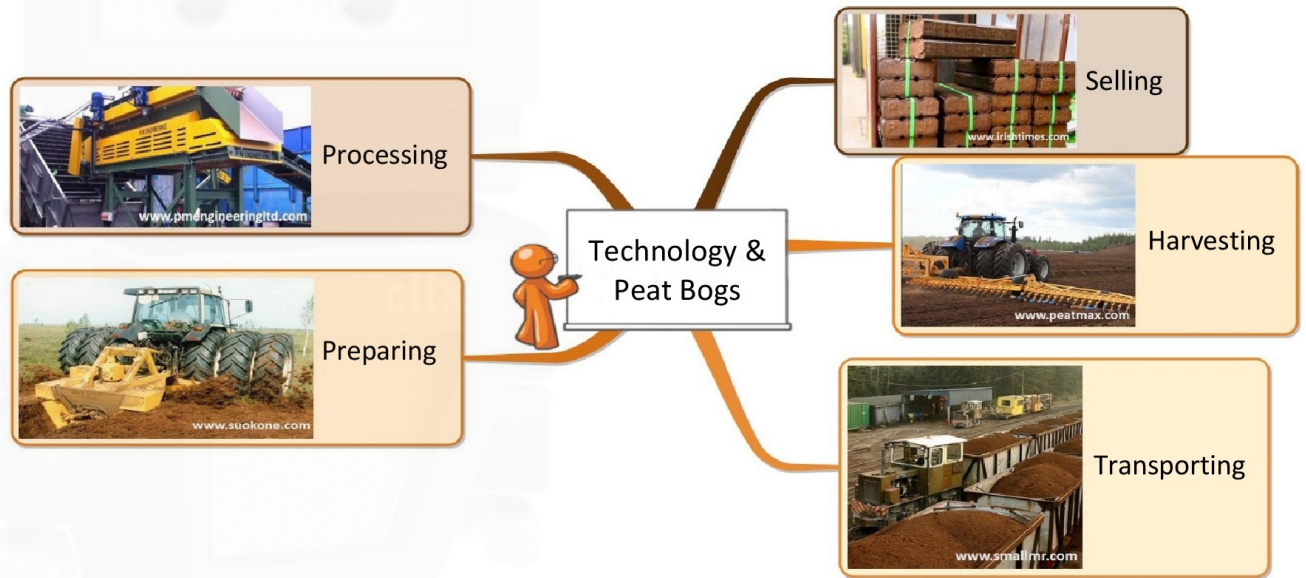


The diagram shows that a farm is a system with inputs, processes and outputs. It also shows that some farm outputs can *also* be farm inputs. In the Selection Box below, draw circles around *three items*, each of which can be a farm input *as well as* a farm output.

<i>animal manure</i>	<i>ploughing</i>	<i>calves</i>	<i>spraying</i>
<i>artificial fertilisers</i>	<i>tractors</i>	<i>harvesting</i>	<i>silage</i>
<i>milking parlours</i>	<i>milk</i>	<i>farm buildings</i>	<i>land</i>

Question 3. ECONOMIC GEOGRAPHY

A. Resources and Technology



Examine the information above.

- (i) Describe **THREE** ways that technology (machines) has increased the amount of peat that is extracted (removed).
- (ii) Describe **ONE** possible use of bogs after the peat has been removed.

14. ECONOMIC ACTIVITIES



Fisherman



Factory Worker



Garda

Which of the following is an example of a worker in a **secondary** economic activity?

Fisherman

Factory worker

Garda

Tick (✓) the correct box.

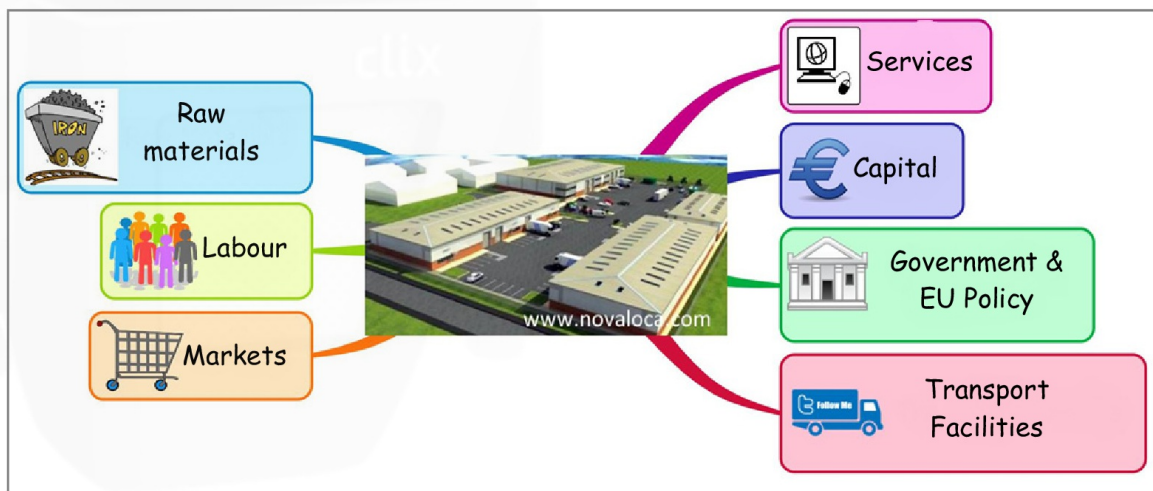
Question 3. ECONOMIC ACTIVITIES

A. Mixed Farming

With reference to a farm that you have studied, describe how farming can be studied as a system with inputs, processes and outputs.

(9)

B. Location of Industry

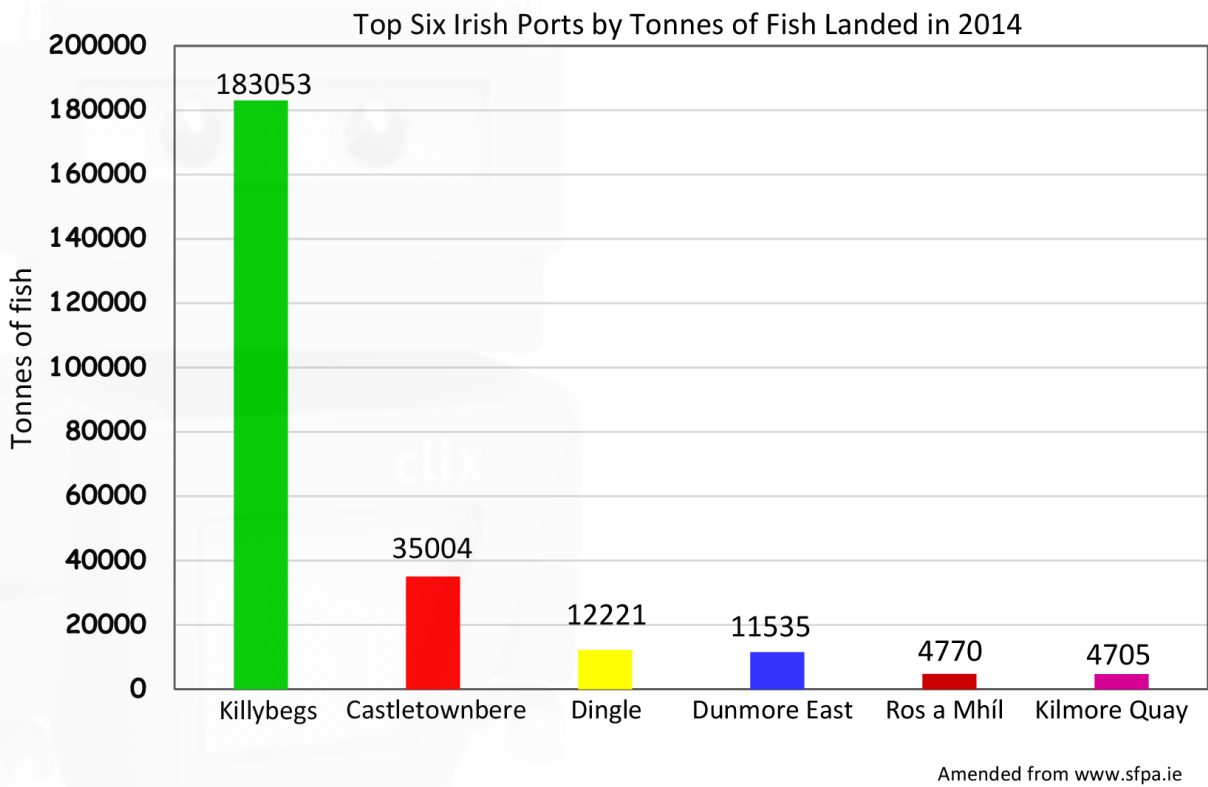


Some of the factors which influence where factories are located are shown in the diagram above.

- (i) Name a factory that you have studied **AND** state where it is located.
- (ii) Describe how any **THREE** of the factors in the diagram have influenced the location of the factory you named above.

(11)

C. FISHING



Study the graph above and answer each of the following questions.

- (i) Which fishing port recorded the second highest tonnage of fish landed in 2014?
- (ii) Calculate the **total** amount of fish landed in tonnes for Dunmore East and Kilmore Quay **combined**.
- (iii) Explain **TWO** causes of the over-exploitation of fish in Irish waters.
- (iv) Name **ONE** fish species which is at risk from overfishing.

Question 8



Factory



Gas Rig



Garda

Which of the photographs above shows an example of a primary economic activity?

Factory

Gas Rig

Garda

[tick ✓ the correct box]

Question 9

10B. ECONOMIC ACTIVITIES

Killybegs is best known as the location for:

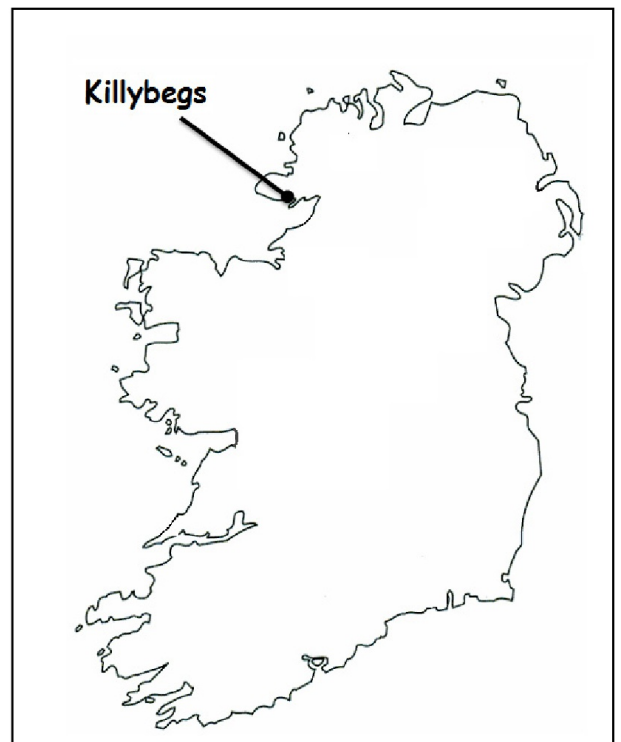
A tourist resort

A fishing port

A large chemical factory

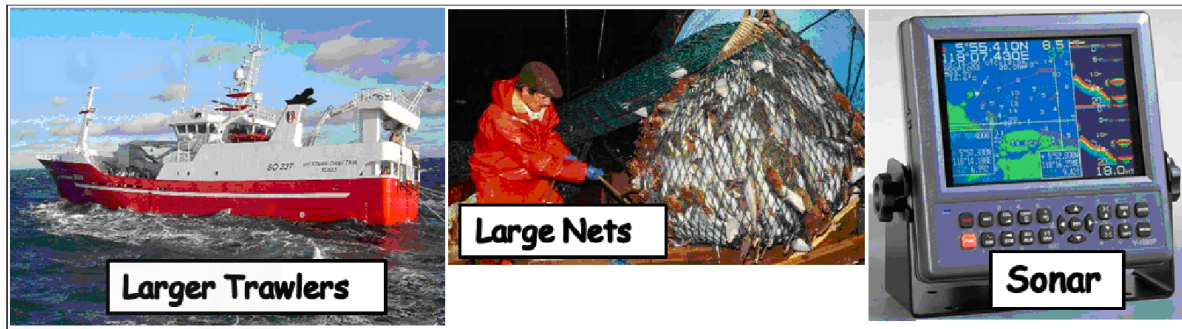
A peat-burning power station

[tick ✓ the correct box]



Question 10

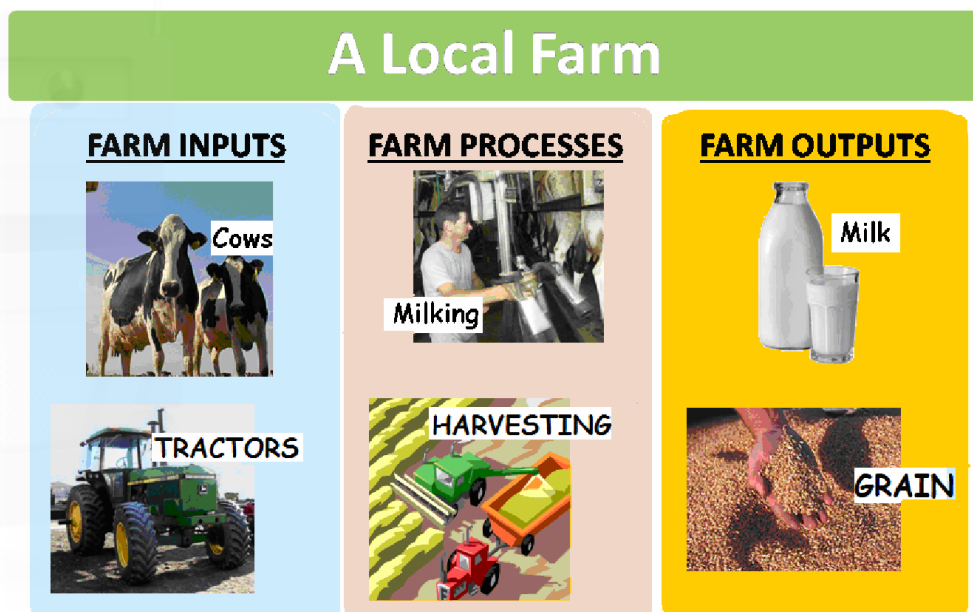
4C. ECONOMIC ACTIVITY – Overfishing



- (i) Explain how any **TWO** of the items shown in the photographs above have helped to cause overfishing. [4]
- (ii) Describe **TWO** results of overfishing in the seas around Ireland. [6]

Question 11

A. Farming as a System



With reference to the diagrams above, explain how **FARMING** works as a system with Inputs, Processes and Outputs. [12]